



SAVE the DATE:
SER-SW 2019 Conference
Tucson, AZ

ACCEPTING ABSTRACTS!

November 8-10 // ENR2 at U of A

We are planning 3 days of presentations, sessions on special topics, and skill-sharing workshops! Now is the time to **submit abstracts**, workshops, special sessions.

SPONSORSHIPS NOW OPEN

VISIT the **CONFERENCE WEBSITE**

Welcome New Board Members!!

New Board Member for California: Lorelee Larios

Lorelee Larios is an assistant professor of plant ecology in the Department of Botany and Plant Sciences, at University of California Riverside. She earned her Ph.D. in Environmental Science, Policy and Management at the University of California-Berkeley and has over 10 years of experience working in California's grasslands. Her research links population and community ecology to invasion biology and restoration ecology and provides insights to how environmental change may influence plant invasions and ecosystem management.

[Link to Lorelee's Lab Page](#)



New Board Member for Nevada: Scott Abella

Scott Abella is an Assistant Professor in Restoration Ecology with the School of Life Sciences at the University of Nevada Las Vegas, and owner of Natural Resource Conservation LLC,

an international company dedicated to applied conservation science and ecological restoration. He has expertise in ecological restoration in several biomes, including deserts internationally, eastern and western North American forests, and prairie and savanna ecosystems. At UNLV, Scott teaches classes in forest ecology, plant ecology, and restoration ecology. In 2015, he published the book *Conserving America's National Parks*, corresponding with the 2016 Centennial of the National Park Service.

[Link to Scott's Lab Page](#)

Who else is on the SER-SW board? [Click here!](#)

NEWS



Mesquite food forests instead of concrete walls?

"What border communities really need are solutions to address economic, health and climate problems — and the mesquite tree can help."

-Gary Nabhan, Op Ed in The Revelator

Members of the Southwest restoration community have developed an idea that supports healthy, functioning ecological communities and along the U.S./Mexico Border.

Follow the link to read more:
THE MESQUITE MANIFESTO
(Photo: Ken Bosma, CC BY 2.0)



Greater Phoenix Green Infrastructure and LID Handbook

For almost two decades, Arizona has experienced drought conditions, raising concerns about water availability, use, and conservation. The use of Green Infrastructure and Low-Impact-Design can provide many benefits onsite and to the surrounding communities.

FIND OUT MORE>>

(Photo: phoenix.gov)

Managing Drought Webinar

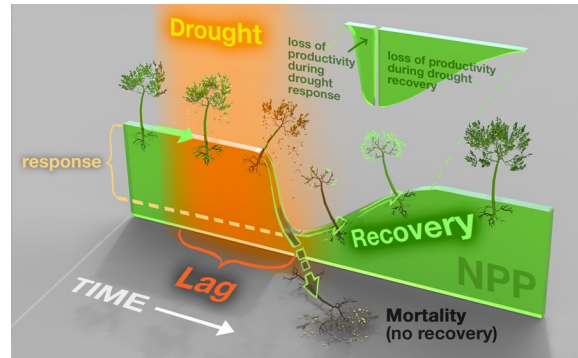
Discussing research that provides

insight into forest management practices that can best minimize drought impacts for a range of forest types and climates in the U.S. [More Information>>](#)

Photo: casc.usgs.gov

Understanding Drought Legacy

New article in Nature discusses how drought affects plant growth long after the drought ends, and how understanding these drought legacy effects are critical to modeling the global carbon cycle and the affects of climate change.



[Read the article>>](#)

Understanding how the legacy of drought(s) affect vegetation communities might be key for pro-active land management.

Phytophthoras, Invasive Plant Pathogens, Raises Alarm for those Restoring Native Species



Pathogen known to impact over 100 native species

Phytophthoras are fungus like plant pathogens that have been found to harm or kill many different native, ornamental and agricultural plant species across the U.S, including California, Arizona and New Mexico. One of the most well-known diseases caused by a *Phytophthora* is sudden oak death.

- Phytophthoras have been found in native plant nurseries and in outplanted restoration sites in arid climates of southern California. No reliable testing in native nurseries or restoration sites in AZ and NM is known to have been completed to show if Phytophthoras are present.
- It is extremely difficult to identify if a plant is infested with *Phytophthora* by viewing

the above ground plant parts, however there are feasible methods for testing.

- Once a plant has been infested there are no known methods for removing the *Phytophthora* without harming the plant. Since infections are often in the roots, the soil associated with the plant may harbor the pathogen even if the plant is removed.
- The best method for limiting the spread of Phytophthoras in restoration areas is to implement best management practices for *Phytophthora* sanitation in the nursery and to conduct testing to ensure restoration container stock is clean.

A few useful resources for more information:

calphytos.org,
Phytophthora root rot
Nursery BMPs
Recent article

Please help by sharing this information through networks and people involved in restoration using nursery transplants. Our climate is not too different from California and there are plenty of phylogenetically closely related plant species in Arizona that can be impacted by this pathogen. Once the pathogen is introduced into the environment, eradication is difficult or impossible so prevention is critical.

For more information on Phytophthoras,
testing, and nursery/restoration BMP's contact:

Nick Wilhelmi nwilhelmi@usda.gov
Katie VinZant kvinzant@fs.fed.us



For more information on how you can test your
nursery stock for *Phytophthora*,
[click here](#)

It's a fun test that involves a pear

Photos: CA Oak Mortality Task Force

JOB BOARD



PROGRAM DIRECTOR

Sky Island Alliance is seeking a personable professional with a hunger for solving big problems who loves working in a collaborative team setting and is interested in shaping the future of the Sky Islands. The Program Director will play a critical role in integrating our diverse initiatives into a comprehensive



Images: Sky Island Alliance

program to help us achieve our strategic plan. This includes integrating international initiatives in Mexico.

The position is full-time exempt, based in Tucson, Arizona, with a salary range of \$50,000 – \$57,000 based on experience. Consideration of applicants will begin March 6. The position is open until filled. [Link for more information>>](#)



RESTORATION COORDINATOR



Grand Junction, CO

REW is seeking a creative and outgoing leader to join their high functioning team to make positive impacts on rivers in the West. The candidate should be collaborative in nature and possess strong project management and technical and grant writing skills, as well as broad knowledge of riparian and/or ecological restoration.

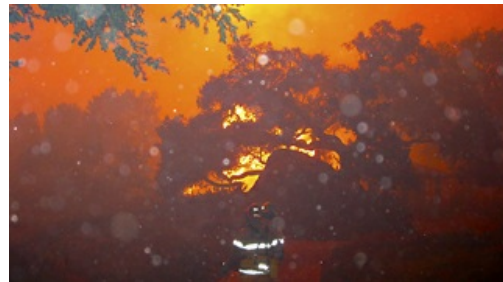
[More Information>>](#)



Santa Barbara Botanic Garden

The Rare Plant Technician assists with a wide range of field, lab, and office work supporting the inventory, conservation, and restoration of California's flora and ecological communities.

[Link for more information>>](#)
Image: sbbg.org



Santa Barbara Botanic Garden

The Applied Ecologist is responsible for designing, conducting, and communicating fire and restoration ecology research and implementation.

[Link for more information>>](#)
Image: sbbg.org

Botany on the Border: Paid Internship with the Borderlands

Searching for a job in restoration?



Check it out!

**SER
JOB BOARD**

**Diversity Joint
Venture
Job Board**

TRAINING & EVENTS

Canyon Country Restoration Workgroup

For researchers, practitioners, and
managers in Southern Utah:

March 19 at 3pm.

[MEETING FLYER>>](#)



**CALIFORNIA
NATIVE PLANT
SOCIETY**

Native Plant Workshops

California Native Plant Society's plant science training workshops provide botanists, biologists, ecologists, and others the scientific skills and practical experience necessary to assess, manage, and protect native plants and lands in California and beyond. Small classes offer hands-on learning from field-leading experts in both the classroom and field.

Details & registration are available now for all 2019 workshops.

[LINK TO MORE INFORMATION](#)



Verde Valley Birding & Nature Festival

Mark your calendars: April 25-28, 2019
[Learn more>>](#)

2019 Southwestern Tribal Climate Change Summit

The 2019 Summit provides an opportunity to come together, focus on climate strategies and solutions, and advance Tribal resilience efforts throughout the Southwest and North America. This Summit will be an interactive leadership-style retreat with small group breakout sessions, plenary style presentations on Tribal case studies, and a powerful climate training opportunity for student ambassadors on August 13-16, 2019 in Idyllwild, CA.

Applications are due by **March 31**. [Learn more >>](#)



Duncan Hay



8TH WORLD CONFERENCE ON ECOLOGICAL RESTORATION

SER 2019 | CAPE TOWN
SOUTH AFRICA



SOCIETY FOR
ECOLOGICAL
RESTORATION



environmental affairs
Department
Environmental Affairs
REPUBLIC OF SOUTH AFRICA



WATER
RESEARCH
COMMISSION

INVEST IN RESTORATION ENHANCE YOUR WORK BECOME A BUSINESS MEMBER



ser.org/BusinessMembership

- 8-20 staff memberships in SER, each with a complimentary subscription to Restoration Ecology and chapter membership
- Deep discounts on professional certification application fees
- Exclusive use of the Business Member logo on your materials
- Enhanced listing of your firm on the Restoration Directory
- Unlimited job postings in the SER Career Center and cross promotion in monthly SER newsletter
- Recognition of your firm in the SER Annual Report



Photo: Thibaud Aronson



Become a member today!

- Attend the 8th World Conference at a discounted rate
- Network with colleagues in your SER Chapter or Section
- Enjoy member pricing on Certified Ecological Restoration Practitioner program fees
- Stay updated through subscriptions to newsletters, research journals, and media feeds
- Participate in complimentary webinars led by experts in the restoration field

www.ser.org/weareSER

Want to add something to the next newsletter?
Email
Website

Connect with
us

