

EL RIO



Gila River...

Drains 50,000 sq. mi.

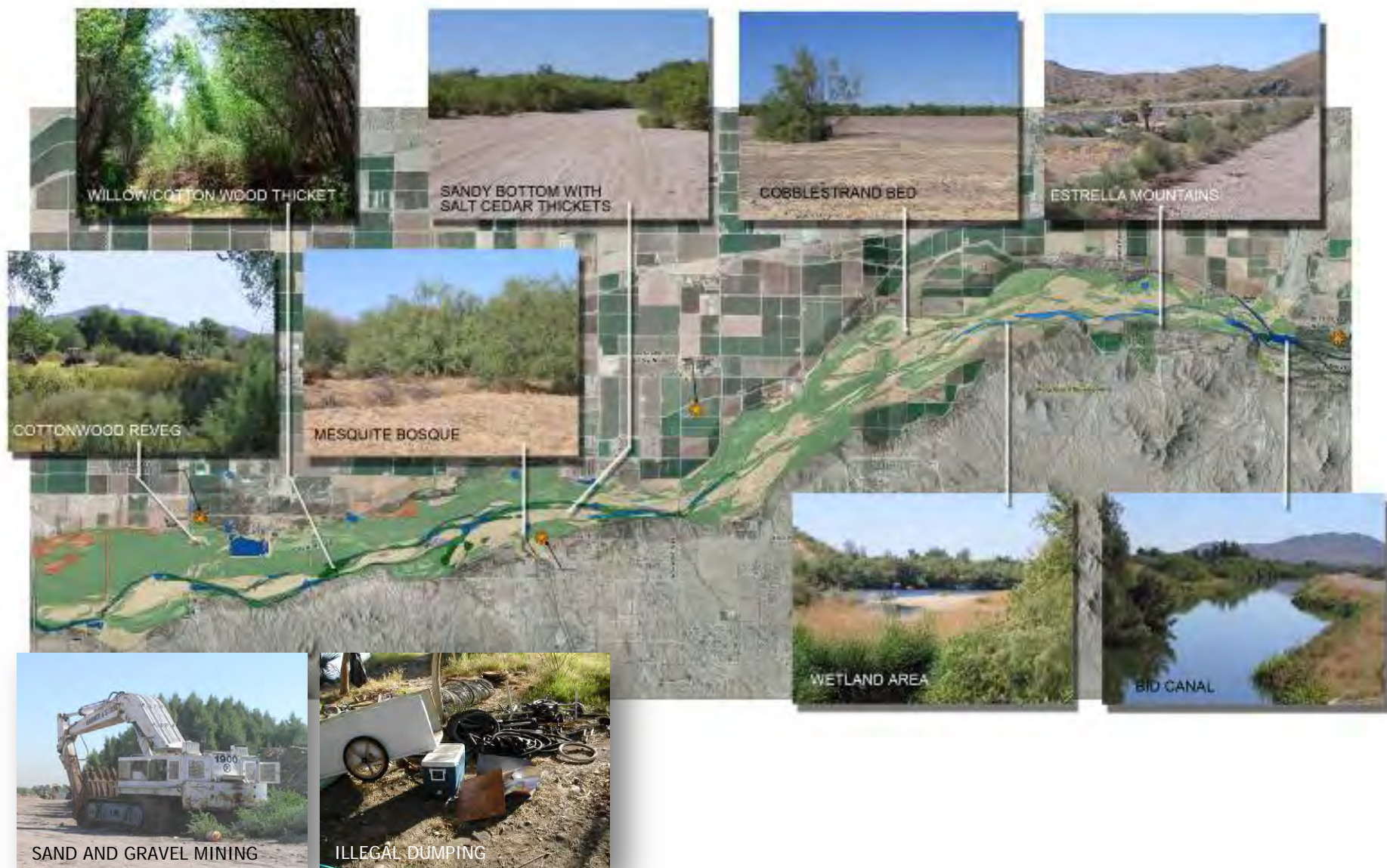


Gila River near AZ/NM border

El Rio Planning Area



The Gila River today...



Salt Cedar or Tamarisk

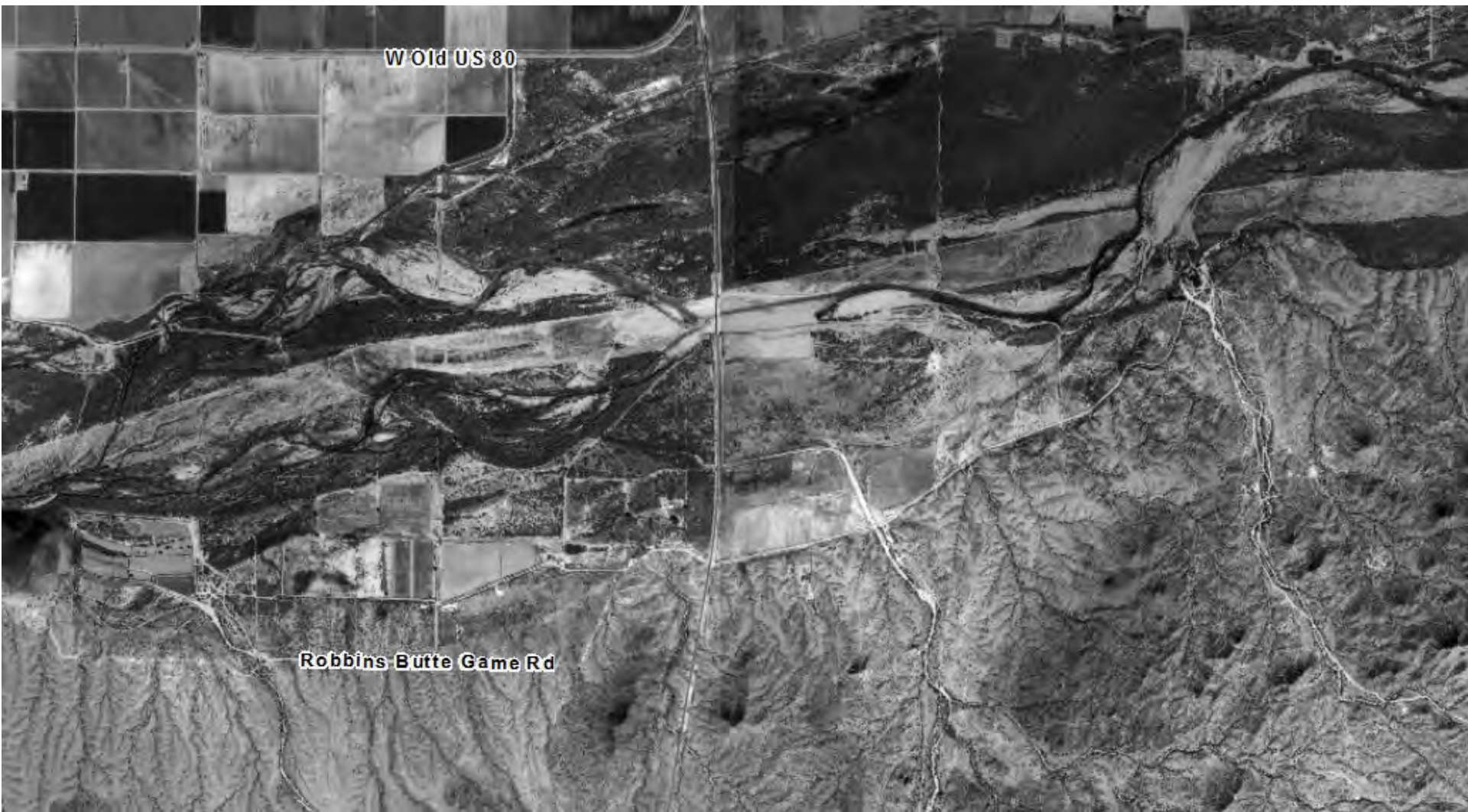
Tamarix ramosissima



1949 @ SR 85



2002 @ SR 85

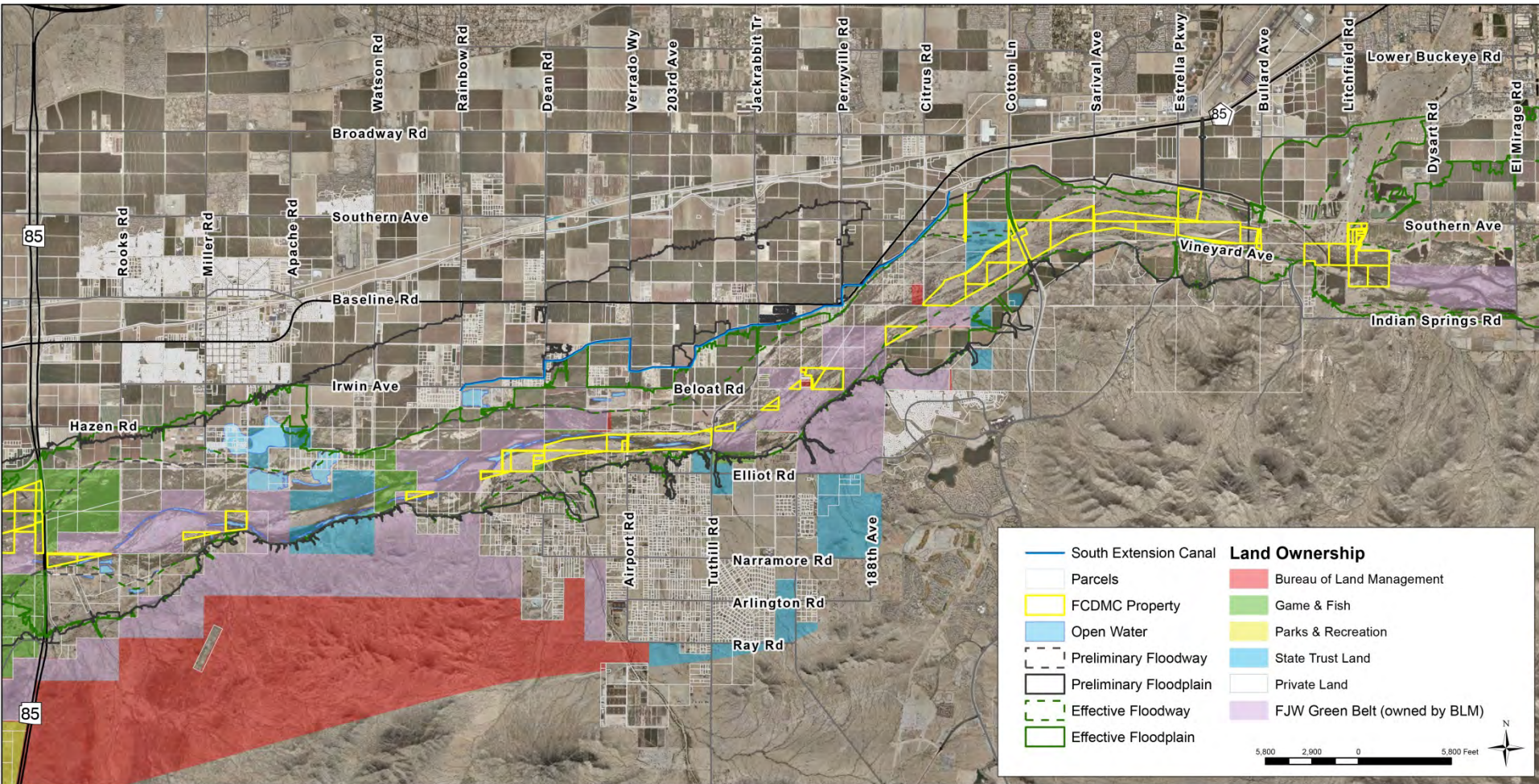


1986-1993

Clearing



Land Ownership



A Vision for the Gila River tomorrow...

Focus on multi-use facilities and functions

Improve water quality
Coordinate flow with transportation corridors
Link up with Estrella Regional Park



Link functional compatibility outside the riparian habitat limits

Link canals and water with developments
Link Estrella Park way with Gila River corridor



Estrella Park - View 2004



At Estrella Park

Maintain, enhance or mitigate flood control elements

Increase flow capacity
Enhance conveyance while also providing flood protection and riparian restoration



Restore and maintain the natural functions within the river corridors a riparian habitat

Provide open flow throughout the reach
Create diversity of habitat and wildlife



Focus on public-private partnerships

Coordinate and fund water-related projects
Promote participation by all stakeholders



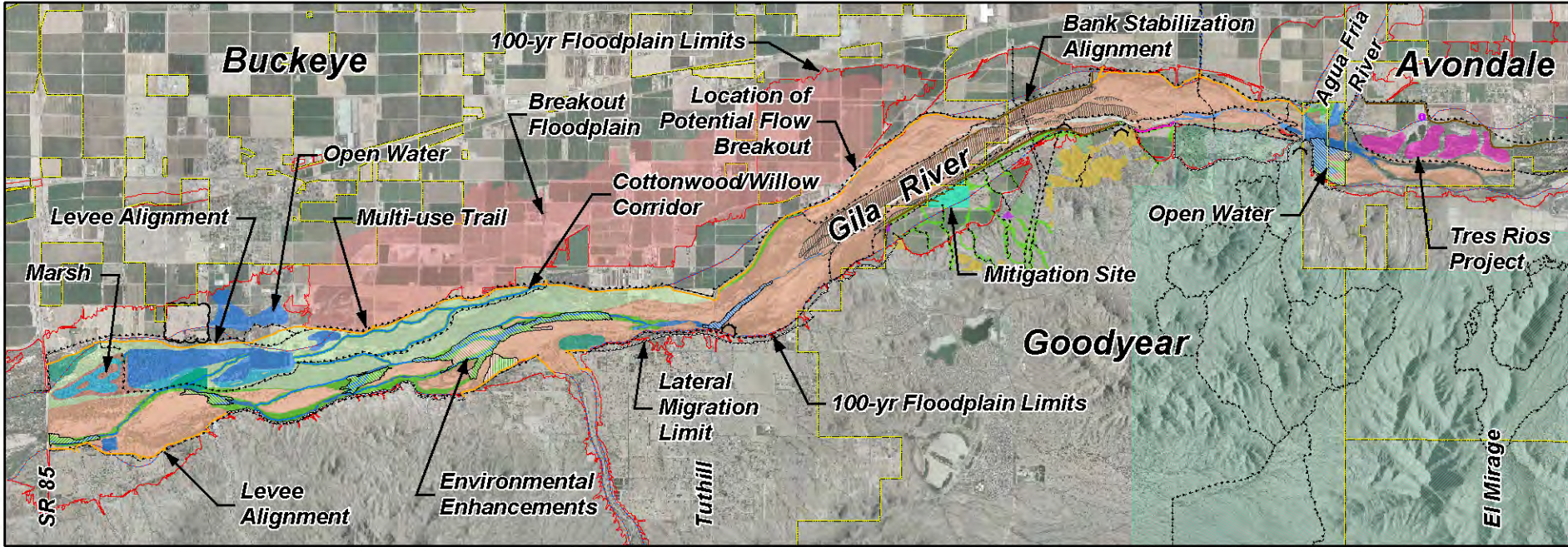
The Gila River

So many are the river people
To know that by the
river for 1000 years
I love the river
I love the
river and the
I think it is so strange
that I have never seen a river
like this
I am just a boy
of 10 years, and I love the river
and the
I think I am a
river boy.

Estrella Mountain Regional Park



2006: Adoption EL RIO WATERCOURSE MASTER PLAN





RESTORATION SITE AT ESTRELLA PARK



2007

Grand Opening

COTTON LANE BRIDGE



2008

Bridge Opening

2007

MOU Adoption

RESTORATION SITE AT MILLER ROAD



2008 | Completed

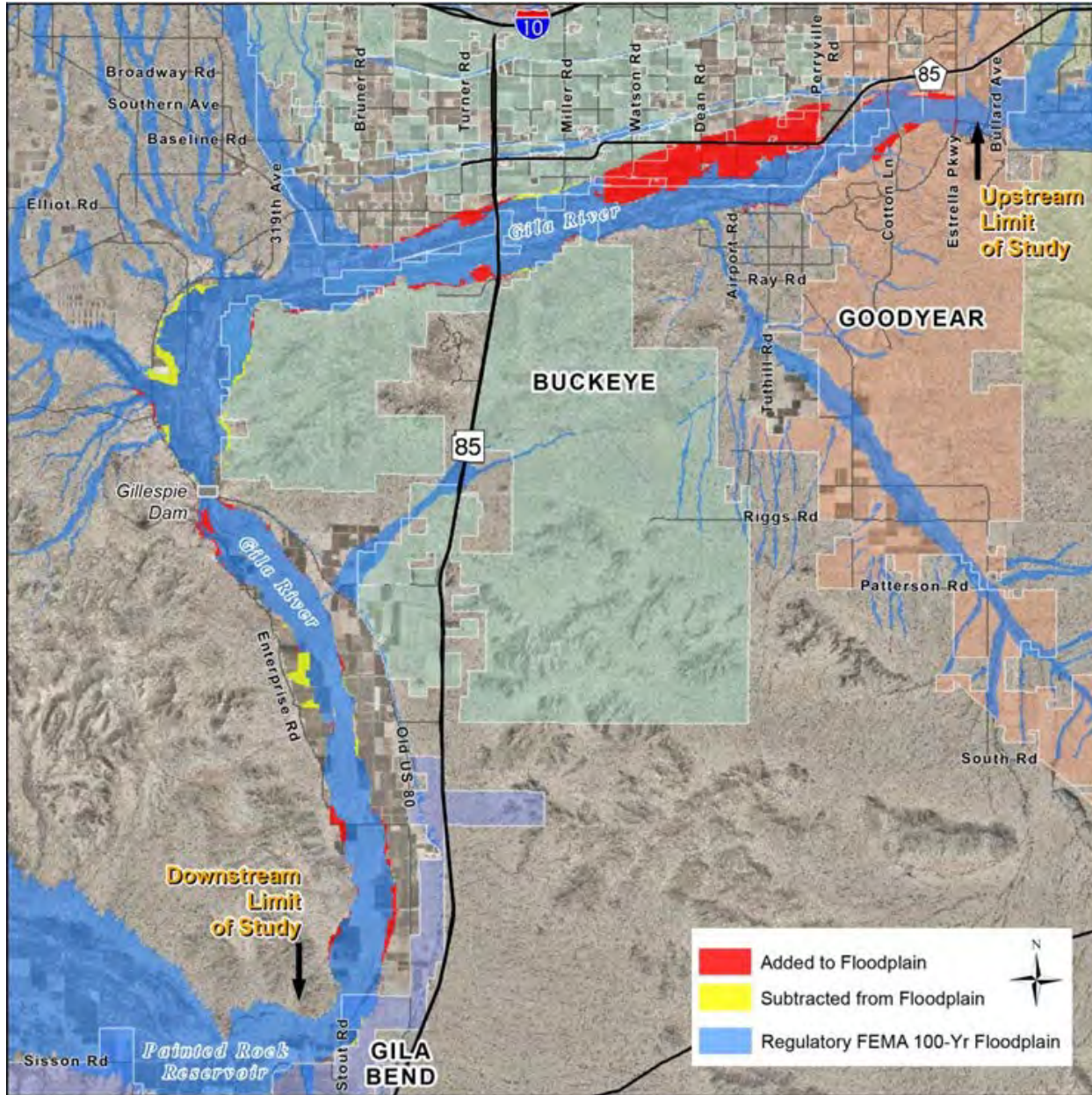
EDUCATIONAL EXHIBIT at Estrella Park



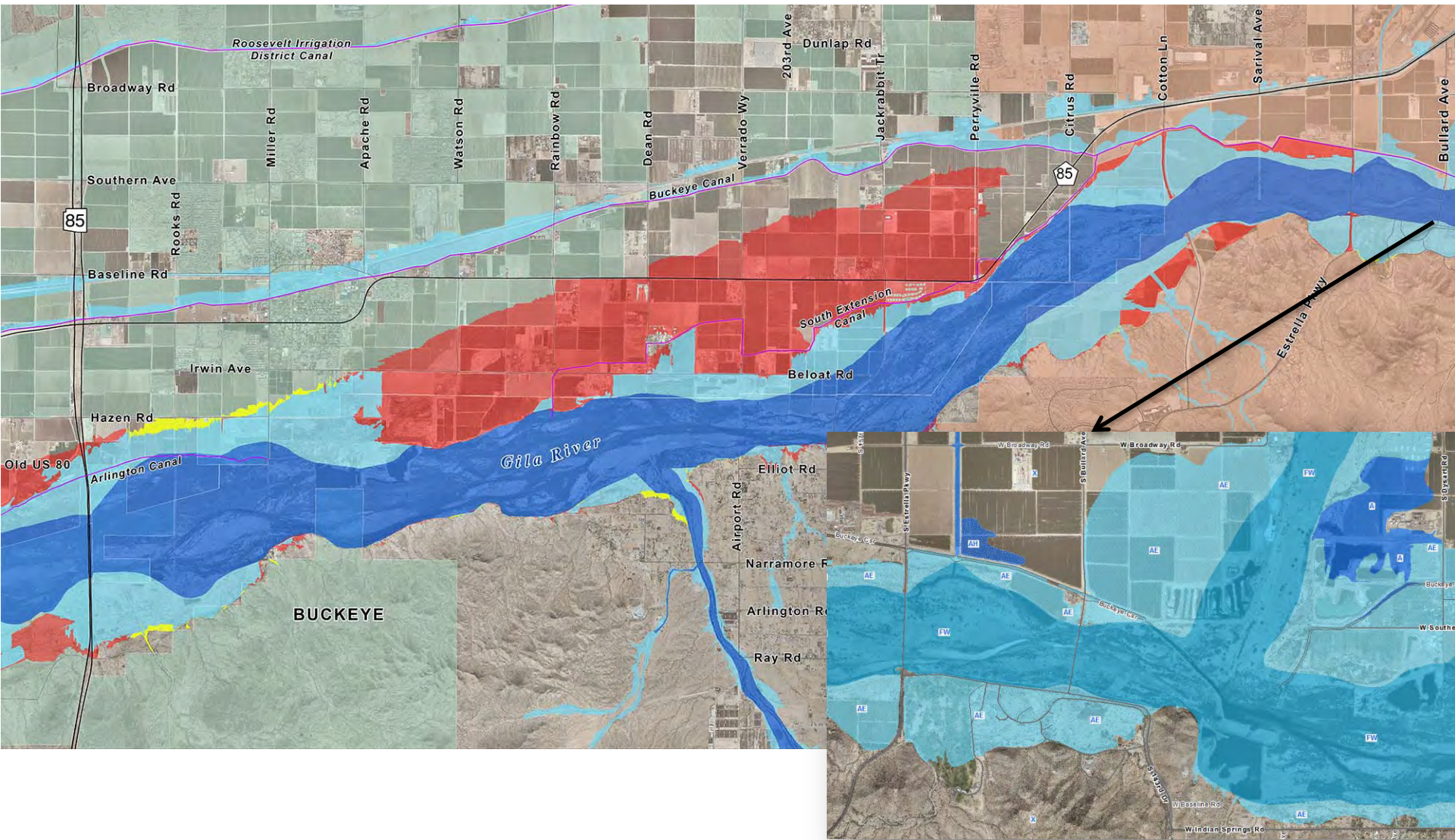
2009

Installation

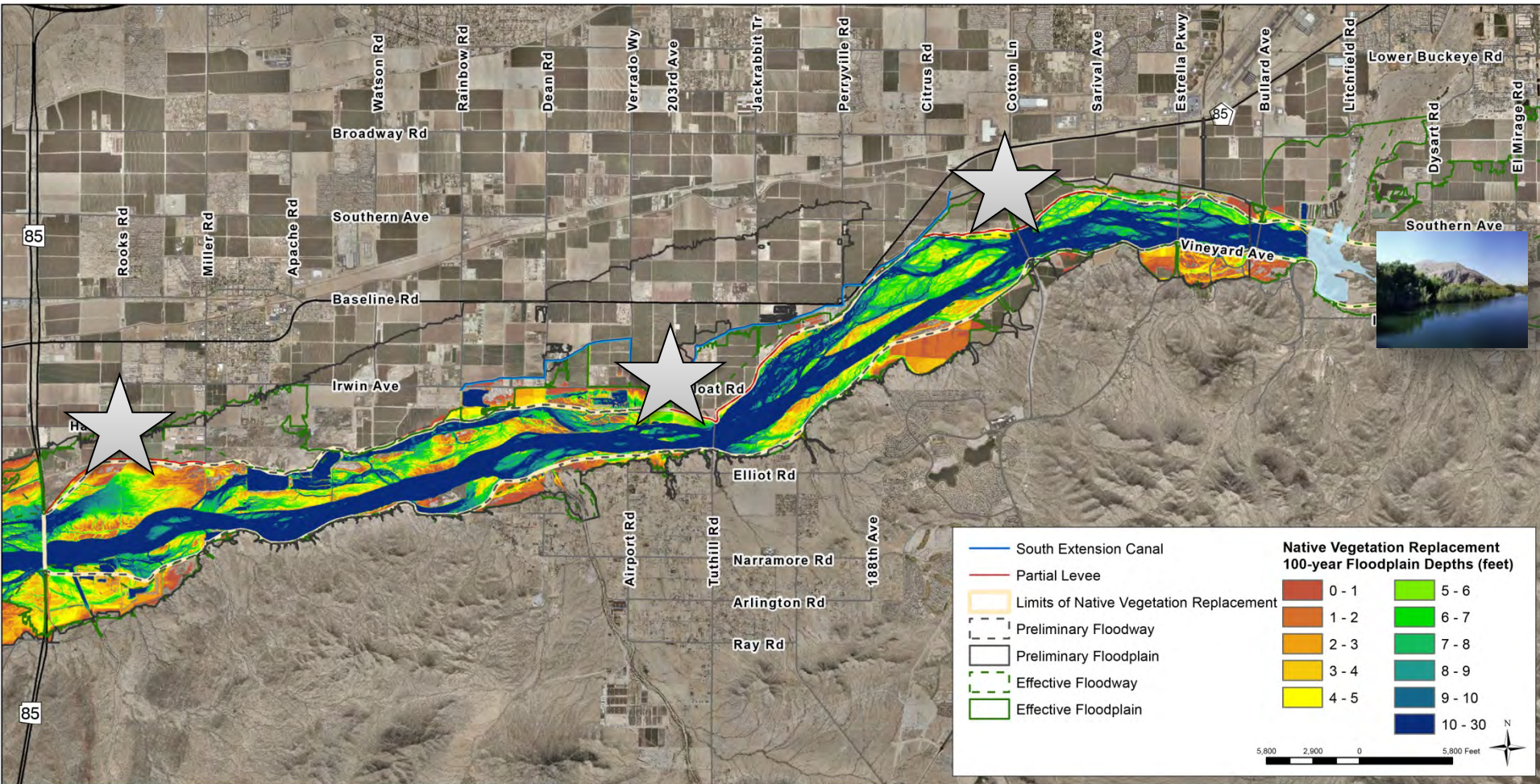
Lower Gila River Floodplain Delineation



Largest Impact: SR 85 to Bullard Avenue



Revised El Rio Plan



- Levees and replacement of salt cedar with native vegetation.
- Removes “new” and existing floodplain.
- Cost: \$360+ million. Opportunities for cost reduction through public-private partnerships, federal funding and grants.

The Path Forward...

- Achieve balance & sustainability
- Use the plan to maintain the coalition
 - Roadmap for multi-purpose salt cedar and floodplain management
 - Proactive vs. Reactive
 - Realize efficiencies from coordinated efforts
 - Provide opportunities for stakeholder participation
 - Greater access to grants and cost-share partners
 - Serve as basis for federal permits
 - Cover public and private lands