

The background of the slide is a photograph of several purple flowers, likely Monarda (Oregano), with green leaves. The flowers are in various stages of bloom, with some showing the characteristic whorled arrangement of the petals.

One Good Garden Changes Everything: Building Public and Ecological Resiliency

**Mid-Atlantic Society for
Ecological Restoration
Karen Kelly Mullin
Willow Oak Group, LLC
March 2013**

“Gardens” Really?





Assumption One

**People
are
Important**



A photograph of a dense forest with many thin, light-brown tree trunks and lush green foliage. The ground is covered with brown, fallen leaves and some small yellow flowers. The text is overlaid on a semi-transparent green rectangular background in the upper center of the image.

**Assumption Two:
Wildlife is just as important as
water quality**

An aerial photograph of an urban area. A large, rectangular green field is the central focus, surrounded by residential and commercial buildings, streets, and trees. The field appears to be a park or a large open space within a city.

There is a Need for Wildlife Habitat Restoration in Urban Areas

2091 20th St NE, Washington, DC 20018

©2010 Google

Backyard Wildlife Habitat Workshops

Who

- **District Department of the Environment, Division of Wildlife**
- **Audubon MD-DC**
- **Funded through a USFWS Grant**

What

- **Improve wildlife value of urban areas**
- **Spatial analysis**
- **Use words, actions and tools**

Backyard Habitat Sites & Significant Wildlife Habitat in Washington D.C.



Legend

Backyard Habitat Workshop Sites

- Site not used
- 2009
- 2010

Ward

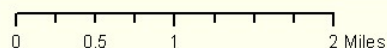
- Boundaries

Significant Wildlife Habitat

- Forest
- Meadow

1 inch = 1.1 miles

Scale: 1:71,700

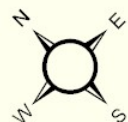


Source:
District Department of the Environment

Prepared by:
Fisheries and Wildlife Division

Date: 03/01/2011

Coordinate System:
NAD 1983 StatePlane Maryland FIPS 1900



Information on this map is for illustration only. The user acknowledges and agrees that the use of this information is at the sole risk of the user. No endorsement, liability, or responsibility for information or opinions expressed are assumed or accepted by any agency of the DC Government.



First 18 months – 2009-2010

- **10 workshops**
- **Average attendance 11**
- **1 year success rate of gardens 20%**



Second 18 months – 2010-2011

Habitat Workshop Providers ISO: Committed active volunteers and a public space to be converted into a wildlife garden. *No need to know anything about nature or gardening.*



Recalibrate

- ***Any public project will fail if it is more important to the people who made it than to those whom use it.***





Workshop Sites

Year



2009



2010



2011



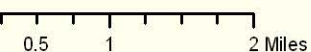
2012

Forested Areas



1 inch = 1.3 miles

Scale: 1:84,100



Source:

District Department of the Environment

Prepared by:

Fisheries and Wildlife Division

Date: 3/20/2013

Coordinate System:

NAD 1983 StatePlane Maryland FIPS 1900



Information on this map is for illustration only. The user acknowledges and agrees that the use of this information is at the sole risk of the user. No endorsement, liability, or responsibility for information or opinions expressed are assumed or accepted by any agency of the DC Government.



Second 18 months – 2010-2011

- 16 workshops
- Average attendance 28
- 1 year success rate of gardens 80%



People are important

Make it Worth Their While



**Meet people
where they are**

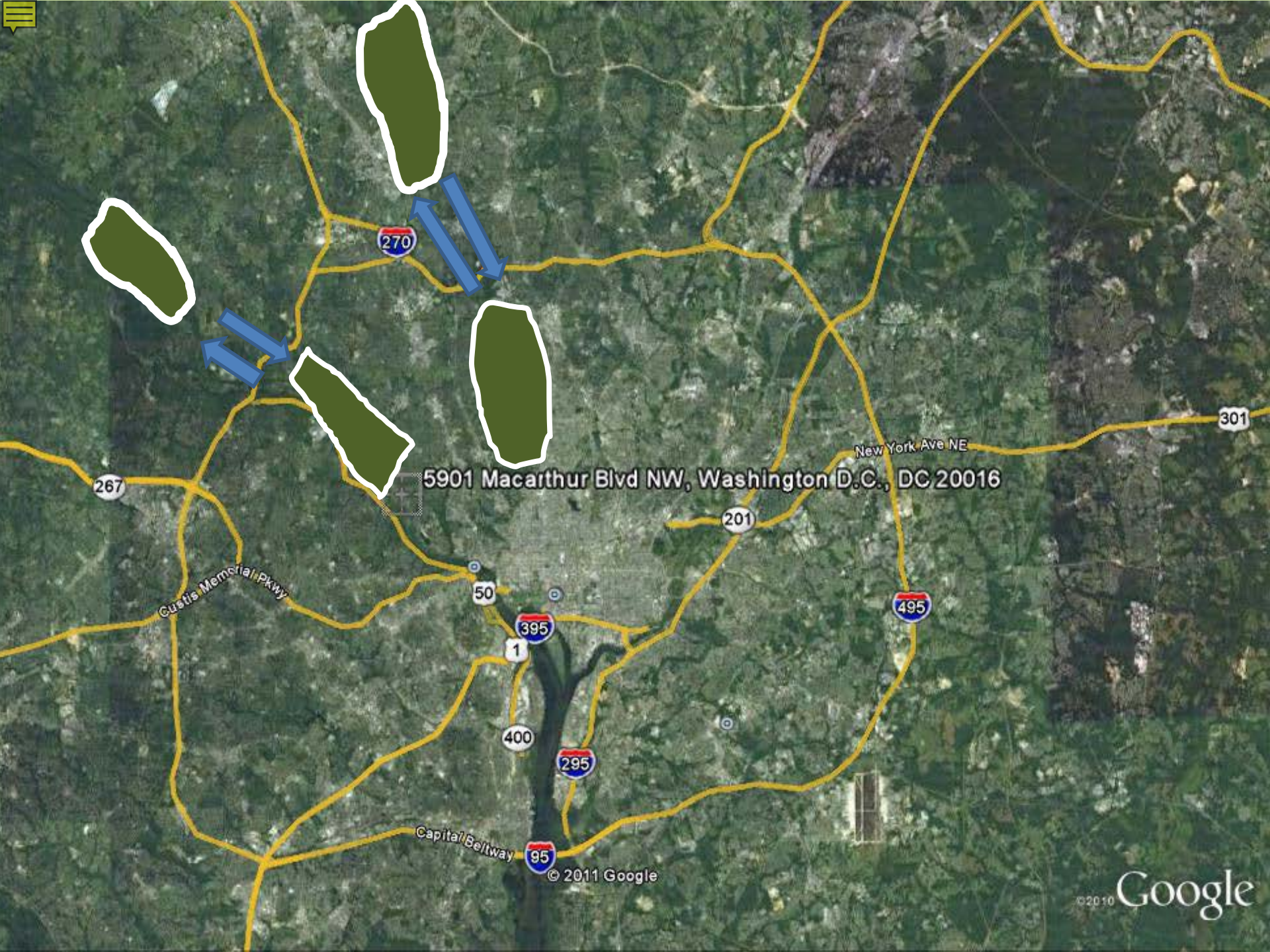
**(Don't make them
say “adaptive
management”
when they want to
say “butterfly”)**



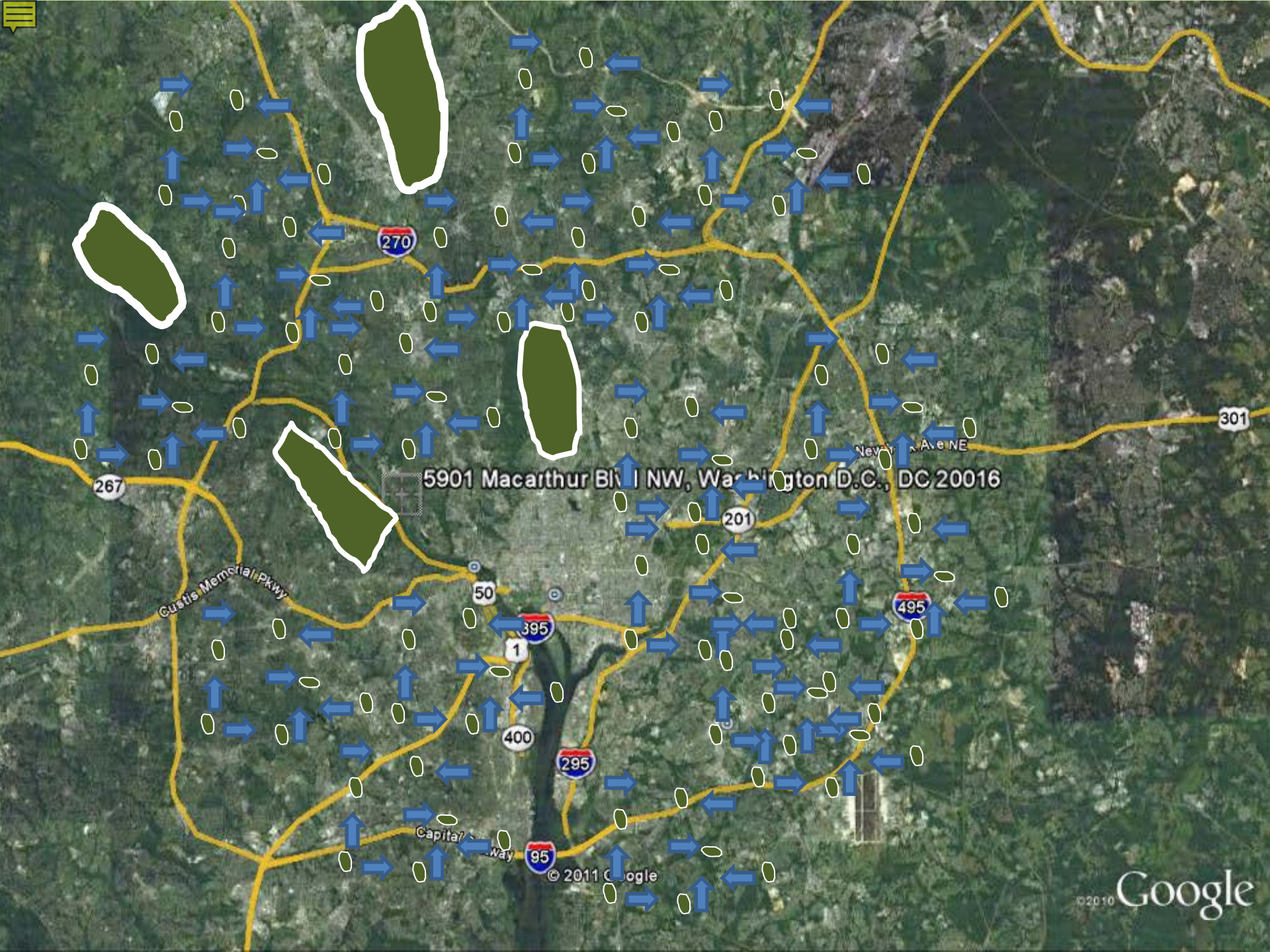


**Hope, not fear
translates into empowerment**





5901 Macarthur Blvd NW, Washington D.C., DC 20016



5901 Macarthur Blvd NW, Washington D.C., DC 20016

© 2011 Google

©2010 Google

Gardens are Cultivation

